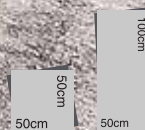


Iban & Iban Plus

Solution Dyed Nylon
Carpet Tiles & Planks



Iban Plus. PLATINUM Lt. Grey 774





Iban

Solution Dyed Nylon

Carpet Tiles & Planks



Installation Method: **Quarter Turn**
Iban. FEDERAL Navy 758



Iban. THE FORCES Dark Grey 779



Iban. PLATINUM Lt. Grey 774



Iban

Solution Dyed Nylon

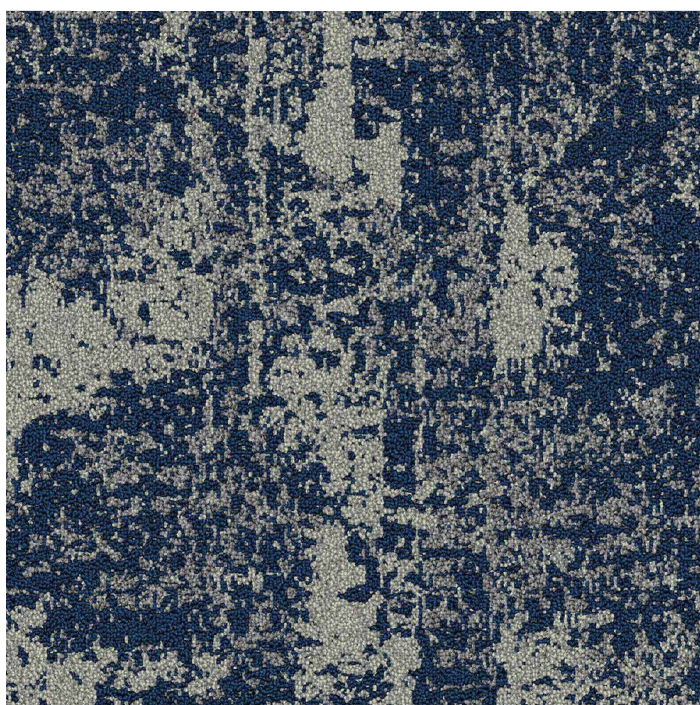
Carpet Tiles & Planks



Installation Method: **Quarter Turn**
Iban. THE FORCES Dark Grey 779



Iban. SWIFT Beige 794



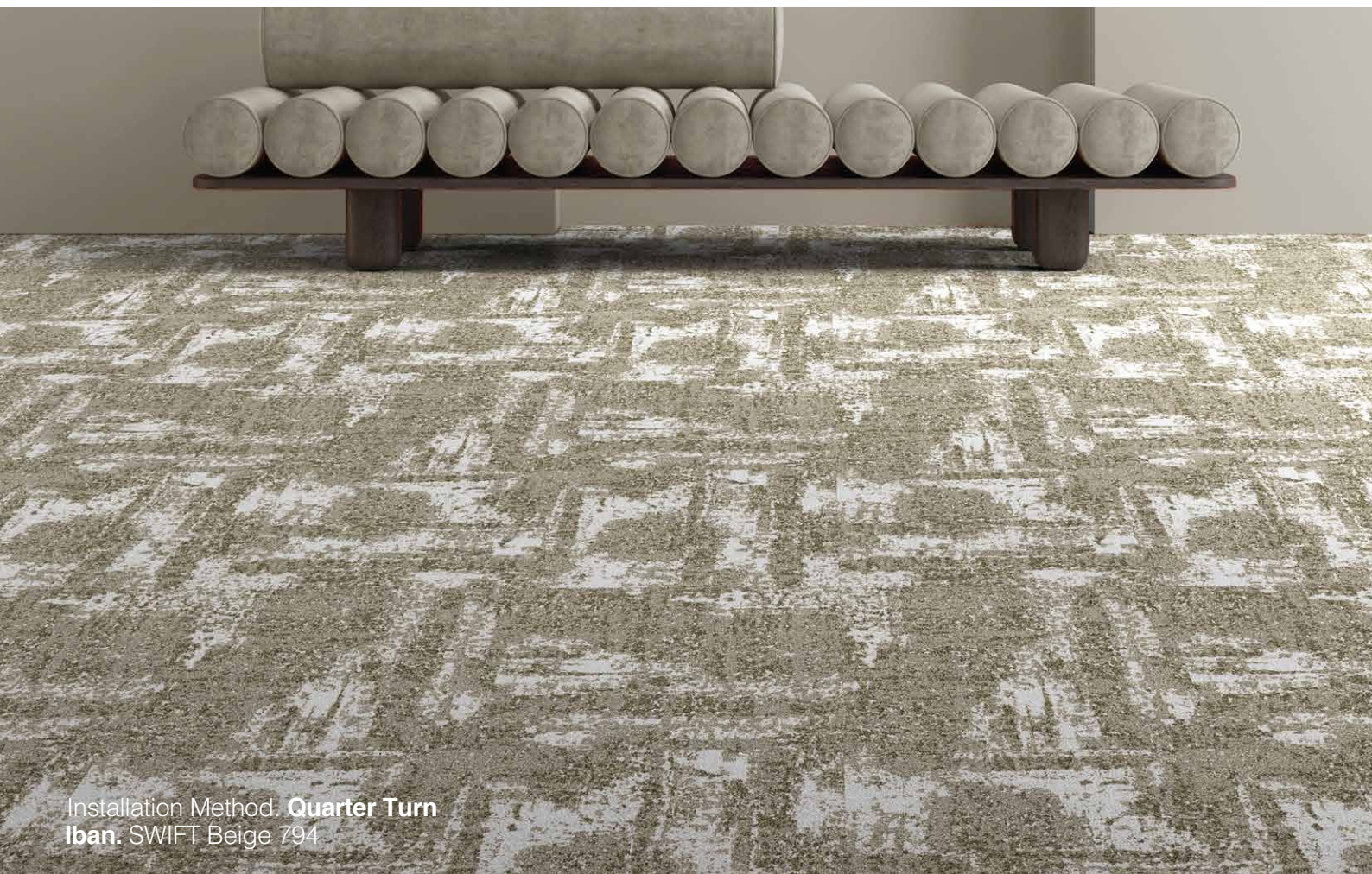
Iban. FEDERAL Navy 758



Iban

Solution Dyed Nylon

Carpet Tiles & Planks



Installation Method: **Quarter Turn**
Iban. SWIFT Beige 794



Iban. ADCB Vanilla 792



Iban. FABULOUS Gold 793

Iban Plus

Solution Dyed Nylon

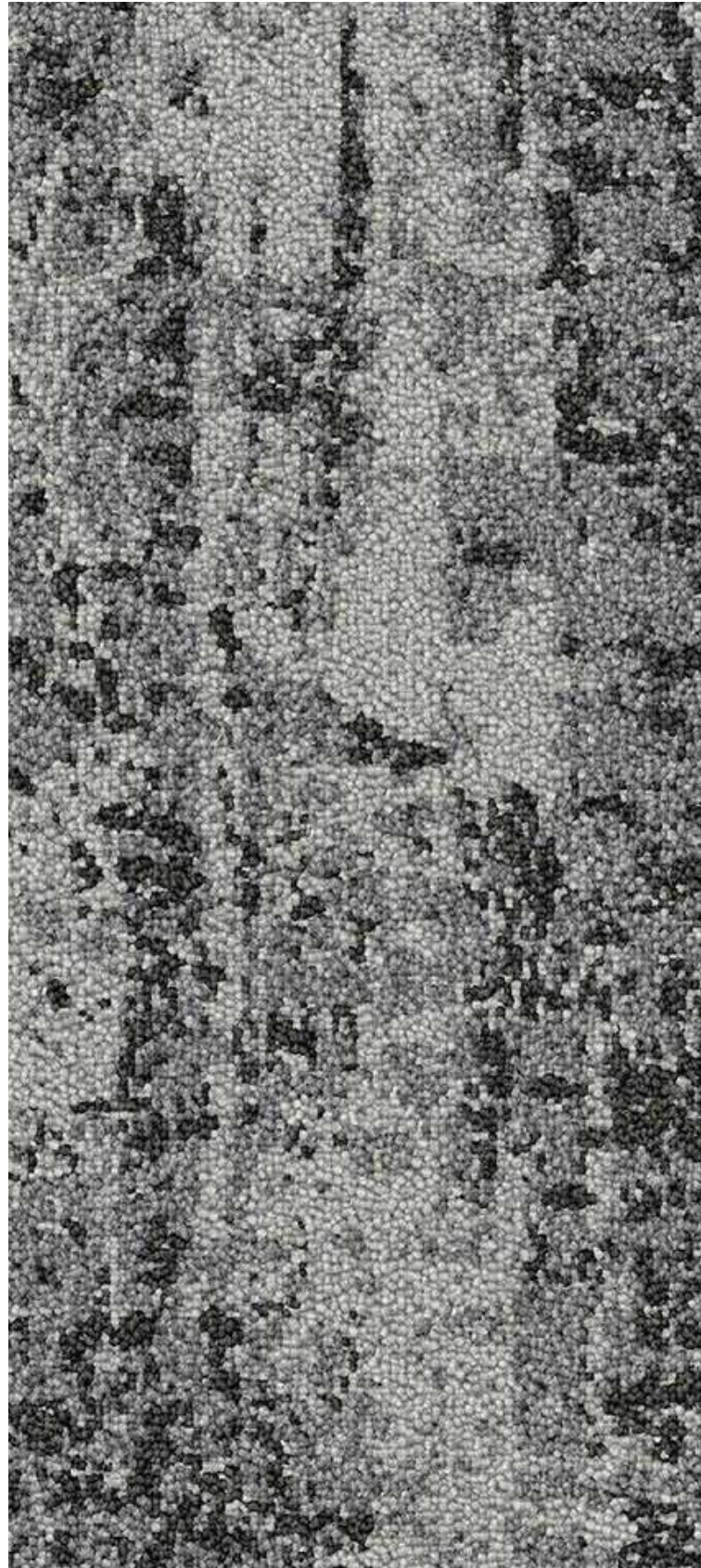
Carpet Tiles & Planks



Iban Plus. FABULOUS Gold 793



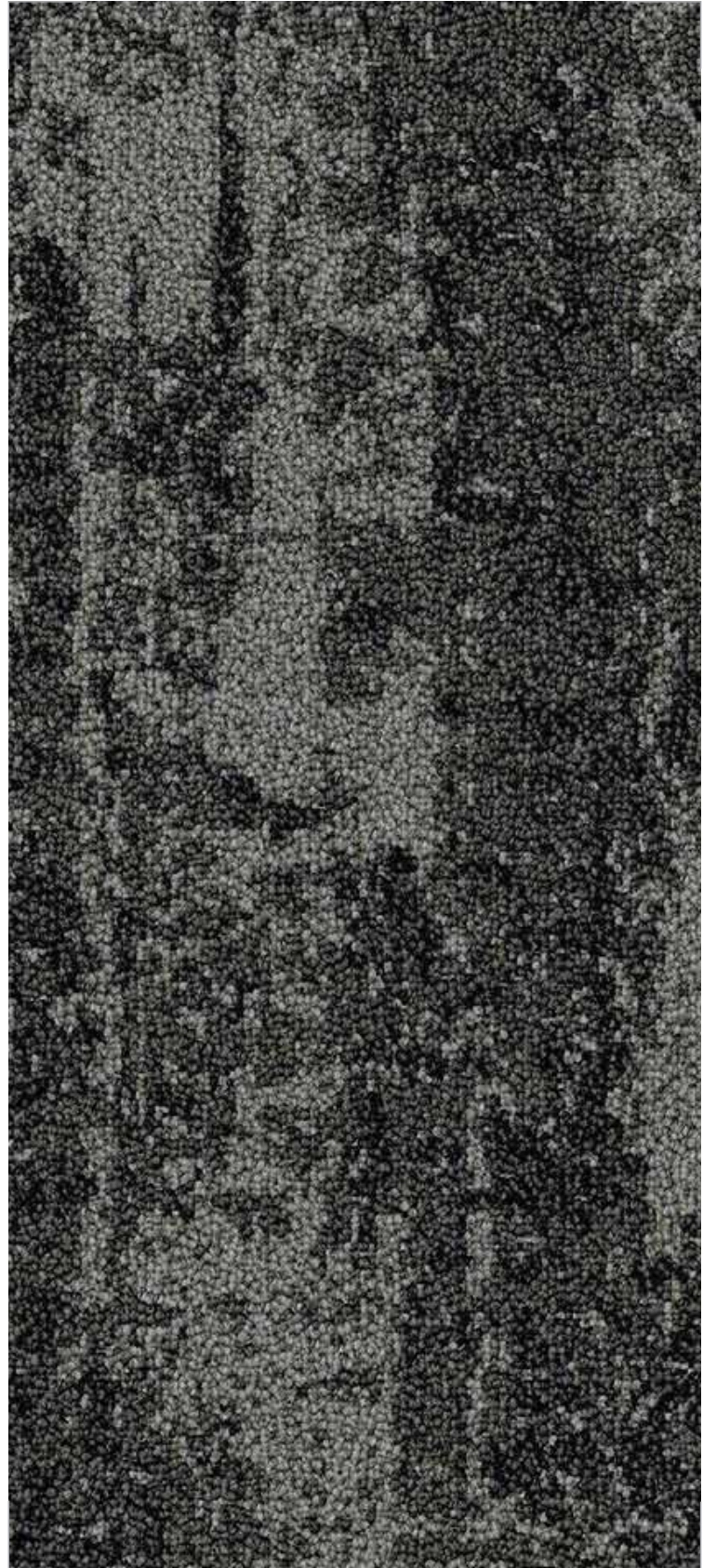
Iban Plus. FABULOUS Gold 793



Iban Plus. PLATINUM Lt. Grey 774



Iban Plus. ADCB Vanilla 792

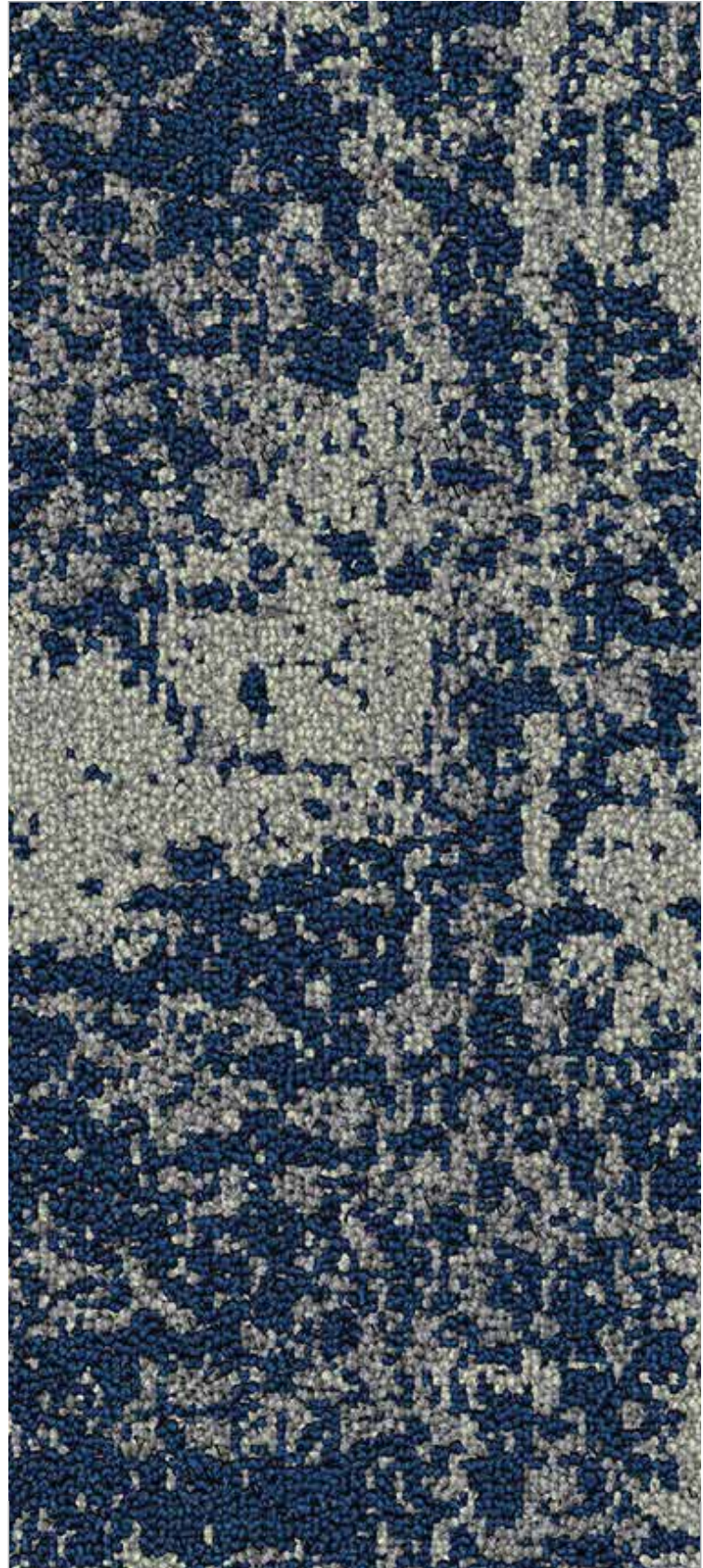


Iban Plus. THE FORCES Dark Grey 779





Iban Plus. SWIFT Beige 794



Iban Plus. FEDERAL Navy 758

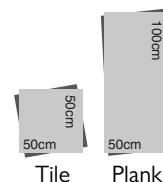


Installation Method. Half Basket

Iban Plus. FABULOUS Gold 793

Iban & Iban Plus

Solution Dyed Nylon
Carpet Tiles & Planks



Product Information

Style	IBAN	IBAN PLUS
Construction	LOOP	LOOP
Fiber	Premium Solution Dyed Nylon	Premium Solution Dyed Nylon
Pile Weight	770 gm/m ²	770 gm/m ²
Total Weight	6.0 kg/m ²	5.8 kg/m ²
Gauge	1/10th	1/10th
Primary Backing	Non-Woven	Non-Woven
Secondary Backing	PVC StableShield	Comfort Plus Cushion Back
Size	50cm x 50cm	50cm x 100cm
Pile Height	3.5 mm ±0.5 mm	3.5 mm ±0.5 mm
Total Thickness	7.0 mm ±0.5 mm	9.0 mm ±0.5 mm
Recommended Installation	Quarter Turn & Brick	Basket, Half Basket & Herringbone
Tile / Carton	20 Pcs (5m ²)	10 Pcs (5m ²)

Technical Performances

Classification	Commercial / Heavy Contract	Class 33
VOC (Green Label Plus)	ASTM D5116-06	< 0.5 mg/m ² /hour (CRI GLP)
Flammability	ASTM D-2859//FF 1-70//16CFR 1630	Pass 8/8
Reaction to Fire	ASTM E648-08	Cfl-S1
Static Propensity	ISO 6356	0.2 KV
Color Fastness	AATCC/16	5/5 on Grey Scale
Thermal Resistance	ISO 8302	0.04 m ² /KW
Impact Sound Insulation	ISO 140-8	23 dB
Dimensional Stability	EN 986	< 0.20%
Castor Chair Test	DIN 54324	R ≥ 2.4
Smoke Density	EN ISO 9239-1:2002	< 450



Terms and Conditions: Specifications are subject to manufacturing tolerance and maybe changed without prior notice. Dye lots may vary in colour from sample and between production lots. All product purchases are Subject to TekSol Standard Terms and conditions of Sale. Please refer to our installation Guideline, Maintenance Manual and Warranty Document for further clarification.

Disclaimer: This Brochure is presented for informational purposes only. Every effort is made to ensure that carpet images are of an accurate representation of the product. However, they are for illustrative purposes only and colour variations may occur in actual product, and between the series. Please note that lineal pattern when installed directional, may produce an undesired effect when lines of the same colour meet of edges. Installer need to monitor this during installations and reposition tiles where appropriate. Patterns that are random in nature may contain additional colour ways to the ones displayed on the samples. Please consult your commercial sales consultant for further informations.